



DEPLOYABLE COMMAND & CONTROL EQUIPMENT



IT'S ALL YOU WILL EVER NEED
TO SEE THE BIG PICTURE.

System Design Features

- | | |
|------------------------------|------------------------------|
| Scalable | Multi-Voltage |
| Modular | Rapid Deployability & Strike |
| Reconfigurable | Commonality of Components |
| Lightweight | Environmental |
| Reduced Transit Requirements | Ease of Operation |

Projection System

- DLP Projector, sealed optics system; native 1400 x 1050 resolution (SXGA+).
- Designed for 24/7 operations.
- 7500-hour maintenance kit
- Environmental control system to reduce projector temperature and prevent dust from collecting on projectors. (PATENT PENDING)
- 2000/4000-hour lamp life, multi-voltage, 2500 ANSI Lumens, 9 lbs low weight, 28 dB(A) low noise.
- Lightweight 1" square tube aluminum frame
- Cantilevered projector mounting arm.
- Integrated mounting points for shelter loudspeakers.
- Multiple projection screens can connect together to form one single large screen.
- Single screen and projector stores in two cases, (120 lbs total weight.)
- Includes wheels for ease of transportation.

Multimedia Control System

- Single case
- All components are diskless (No hard drives; no corruption due to power failure).
- Control via Web interface or optional touchpanel.
- Supports multiple displays and display types.
- Display processor: Combines 4, 6 or 12 real-time video and computer inputs in Windows onto one display. Windows can be scaled up to full screen. Capable of accepting and displaying images with a resolution of up to 1600 x 1200 dpi.
- Distribution Matrix: Flexible configuration of 4 inputs and 4 outputs to 32 inputs and 32 outputs in multiples of four in a single enclosure; field upgradeable. Capable of routing RGBHV over CAT-5.
- Environmental control system to regulate system temperature and prevent dust and debris from collecting on the system. (PATENT PENDING)
- Systems are less than 280 lbs.
- Multiple configurations are available.

Reeves[®]
EMS LLC
A DHS TECHNOLOGIES COMPANY

For more information contact Reeves EMS at:

4510A Metropolitan Court, Frederick, MD 21704

Tel: 800.328.5563 Fax: 301.698.1599

Email: info@ReevesEMS.com

Website: www.ReevesEMS.com

DC2E PROJECTION SYSTEM

BP300A002-0001



- DLP Projector includes a sealed optics system. System displays images with a resolution of up to 1400 x 1050 dpi (SXGA+).
- Designed for 24/7 operation. To ensure continuous operation, a maintenance kit is available for the projector that replaces all moving internal components within 7500 hours of system operation.
- 2000/4000-hour lamp life. Multi-voltage 2500 ANSI Lumens, 9 lbs (4 kg) low weight, 28 dB(A) low noise.
- Lightweight 1" square aluminum frame system with locking hinge points for fast set up and take down. Diagonal viewing area is 4 x 5 feet over 73 inches.
- Cantilevered projector mounting arm preserves valuable floor space.
- Integrated mounting points for shelter loudspeakers allow for surround sound quality audio.
- Multiple projection screens connect together to form a single large screen.

Optional Components

- Environmental Control System available to regulate projector temperature and prevent dust and debris from collecting on the projector in high temperature conditions (patent pending).
- Two-way Speaker with 5.25" (13 cm) shielded woofer and 1" wide dispersion tweeter. Includes internal 20W amplifier and can accept VHF or UHF wireless microphone modules. Also allows for the ability to daisy chain multiple speakers. Dual-voltage (110V/220V), user switched operation. May be free standing or mounted to a DRASH Shelter projection frame with supplied U-Mount Bracket. Weighs 8.5 lbs. (3.8 kg) without VHF/UHF receiver modules.

Packing

The screen and projector may be stored in two cases with wheels to easily transport from location to location.

Dimensions/Weight

Packed Screen Case:

50" W x 17.5" D x 13" H (127 x 44.5 x 33 cm)

Weighs 74 lbs. (33.6 kg)

Packed Projector Case:

24.5" W x 19.5" D x 15" H (62 x 50 x 38 cm)

Weighs 41 lbs. (18.6 cm)

DC2E AUDIO-VISUAL SYSTEMS



The DC2E's Audio-Visual System comes in four different configurations: Mini, Small, Medium and Large (see next page). The following features are available for all configurations:

- Diskless components for increased reliability. Systems do not require additional software.
- Supports multiple displays and display types.
- POTS Line connects to standard analog phone line for audio conferencing.
- CTL LAN connects to LAN for WEB based control of the AV System.
- Display processor combines 4, 6 or 12 real-time video and computer inputs onto one display. Windows can be scaled up to a full screen. Capable of accepting and displaying images with a resolution of up to 1600 x 1200.
- Flexible configuration of four inputs and four outputs to 32 inputs and 32 outputs in multiples of four in a single enclosure.
- Includes molded, weather-resistant transport cases for the control system and accessories.

DC2E A/V SYSTEM COMPARISON MATRIX

System Name	Video Inputs			Video Outputs		Multi - Window		Audio Inputs		Audio Outputs	AKG Conf. Mic System	Touch - Panel		Web Control	Acc. Case	Tele - Conf	Powered Speaker
	HD15 (RGB)	CAT5 (RGB)	CV (C)	HD15	CAT5	6 Win	4 Win	Mic Level	Line Level	Line Level	Yes/No	With Video	W/O Video	Yes/No	QTY	Yes/No	QTY
Large A/V System 110v BP300A008	1	20	8	5	8	1	2	4	4	4	No	1	0	Yes	2	Yes	2
Medium A/V System 110v BP300A007	2	12	4	4	4	1	1	4	4	4	No	1	0	Yes	1	Yes	2
Medium A/V System 110/220v BP300A016	2	12	4	4	4	1	1	4	4	4	No	1	0	Yes	1	Yes	2
Small A/V System 110/220v BP300A006	1	8	2	3	4	0	1	3	4	4	Yes	1	0	Yes	2	Yes	2
Mini A/V System 110v BP300A011	4(A)	0	2(A)	2(B)	0	0	1	2	2	2	No	0	1	Yes	1	Yes	1

Notes:

- (A) Inputs 1 & 2 can be selected as either an RGB (HD15) signal or a composite (CV) signal. For example, you can not display the RGB_1 (HD15) input and Composite_1 (CV) input at the same time on the display.
 (B) Both outputs display the same image. The outputs are mirrored.
 (C) CV = Composite Video

MINI AUDIO-VISUAL SYSTEM

BP300A011

- Interface via touch panel or secure Internet connection.
- Video In: Four HD15 Computer Inputs that accept up to 1600 x 1200 resolution. Two BNC Composite Inputs for DVD/DSS and/or Camera/UAV.
- Audio In: Two Mic level XLR Inputs and two Line Level XLR Inputs for DVD/DSS audio.
- Video Out: Two HD15 (mirrored) outputs supporting 1024 x 768, 1280 x 1024 and 1400 x 1050 user selectable resolutions.
- Audio Out: Two Line Level XLR outputs, one dedicated for speaker.
- Includes one AC powered speaker with integrated 20 Watt amplifier for audio distribution.

PACKAGING

Mini AV Case

5RU OD green case containing the Control System, Quad Window Display Processor and Audio Matrix/Mixer.

Outer Dimensions: 40.4"L x 27"W x 16.6"H
(103 x 69 x 42 cm)

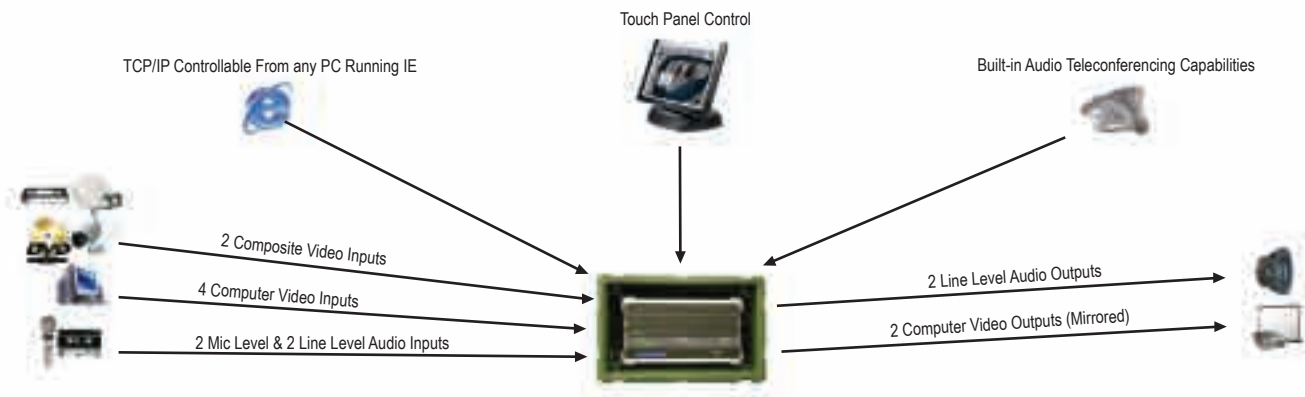
Packed Weight: 115 lbs. (52 kg)

Accessory Transport Case

Includes cables, touch panel and speaker.

Outer Dimensions: 24"L x 20.5"W x 15"H
(61 x 52 x 38 cm)

Packed Weight: 54 lbs. (25 kg)



SMALL AUDIO-VISUAL SYSTEM

BP300A006

- Interface via touch panel or secure Internet connection. Touch Panels may also be used to view/cue video to be displayed on projection screens.
- Long Distance Video Distribution System: Uses RGBHV over CAT5 technology for long distance video distribution with minimal signal degradation.
- Video In: One HD15 and eight CAT5 Computer inputs that accept up to 1600 x 1200 resolution. Two BNC Composite Inputs for DVD/DSS or Camera/UAV.
- Audio In: Three Mic level XLR Inputs and four Line Level XLR Inputs for DVD/DSS audio.
- Video Out: Three HD15 and four CAT5 Computer outputs supporting 1024 x 768, 1280 x 1024 and 1400 x 1050 user selectable resolutions.
- Audio Out: Four Line Level XLR outputs; one dedicated for speaker. Four Conference Mic Station Outputs. Mic Stations are daisy chainable.
- Local conference microphone system provides six delegate stations and one chairman station, but supports up to 40 stations.
- Includes two AC powered speakers with integrated 20 Watt amplifier that can be daisy chained together for audio distribution.

PACKAGING

Small AV Case

12RU OD green case contains the Control System, a Four Window Display Processor, a Quad Video Scaler, an Audio Matrix/Mixer and 12 x 12 RGBHV Matrix Switcher.

Outer Dimensions: 40"L x 27"W x 27.9"H
(101 x 69 x 71 cm)

Packed Weight: 211 lbs. (96 kg)

Accessory Transport Case 1

Includes cables, touch panel, speakers and CAT5 TX/RX units.

Outer Dimensions: 30"L x 21.5"W x 30"H
(76 x 55 x 76 cm)

Packed Weight: 138 lbs. (63 kg)

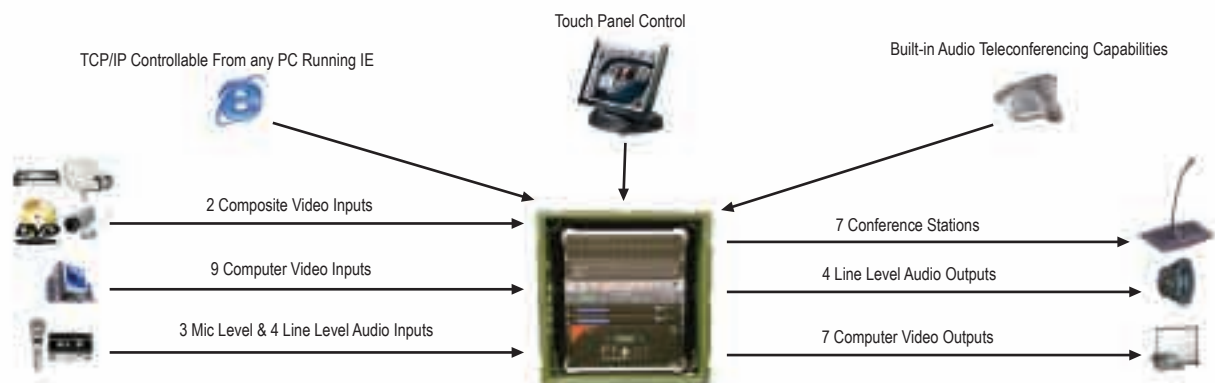
Accessory Transport Case 2

Includes conference base stations, gooseneck microphones and cables.

Outer Dimensions: 32.88"L x 13.50"W x 17.25"H

(84 x 34 x 44 cm)

Packed Weight: 63 lbs. (29 kg)



Reeves[®]
EMS LLC
A DHS TECHNOLOGIES COMPANY

For more information contact Reeves EMS at:

4510A Metropolitan Court, Frederick, MD 21704

Tel: 800.328.5563 Fax: 301.698.1599

Email: info@ReevesEMS.com

Website: www.ReevesEMS.com

MEDIUM AUDIO-VISUAL SYSTEM

BP300A007

- Interface via touch panel or secure Internet connection. Touch Panels may also be used to view/cue video to be displayed on projection screens.
- Long Distance Video Distribution: Uses RGBHV over CAT5 technology for long distance video distribution with minimal signal degradation.
- Video In: Two HD15 and 12 CAT5 Computer Inputs that accept up to 1600 x 1200 resolution. Four BNC Composite Inputs for DVD/DSS or Camera/UAV.
- Audio In: Four Mic level XLR Inputs and four Line Level XLR Inputs for DVD/DSS audio.
- Video Out: Four HD15 and four CAT5 computer outputs supporting 1024 x 768, 1280 x 1024 and 1400 x 1050 user selectable resolutions.
- Audio Out: Four Line Level XLR outputs, one dedicated for speaker.
- Includes two AC powered speakers with integrated 20 Watt amplifier that can be daisy chained together for audio distribution.

PACKAGING

Medium AV Case

14RU OD green case contains Control System, a Four Window Display Processor, a Six Window Display Processor, a Quad Video Scaler, an Audio Matrix/Mixer and a 20 x 20 RGBHV Matrix Switcher.

Outer Dimensions: 40.4"L x 27"W x 33"H
(103 x 69 x 84 cm)

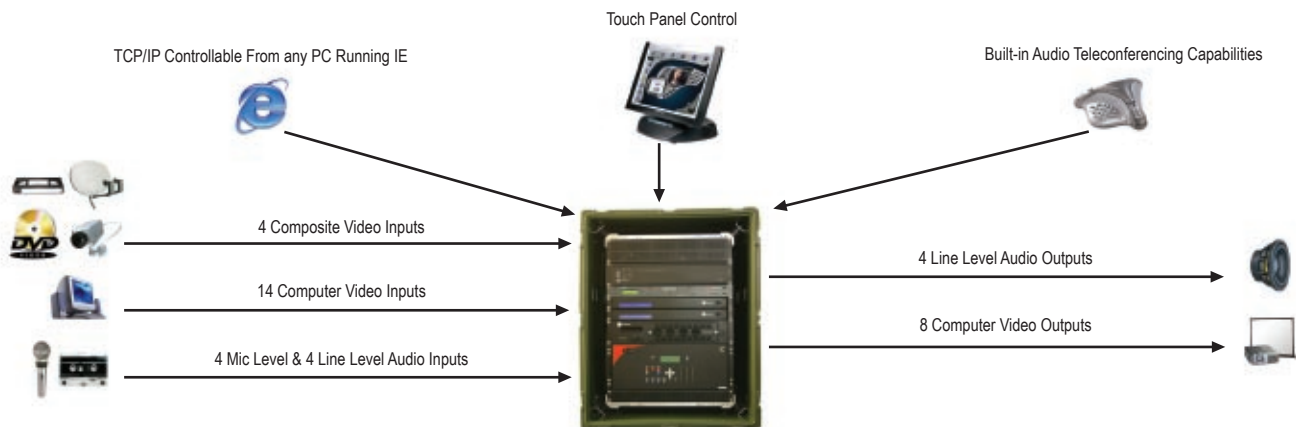
Packed Weight: 220 lbs. (99.8 kg)

Accessory Transport Case

Includes cables, touch panel, speakers and CAT5 TX/RX units.

Outer Dimensions: 30"L x 21.5"W x 30"H
(76 x 55 x 76 cm)

Packed Weight: 151 lbs. (68 kg)



LARGE AUDIO-VISUAL SYSTEM

BP300A008

- Interface via touch panel or secure Internet connection. Touch Panels may also be used to view/cue video to be displayed on projection screens.
- Long Distance Video Distribution: System uses RGBHV over CAT5 technology for long distance video distribution with minimal signal degradation.
- Video In: One HD15 and 20 CAT5 Computer Inputs that accept up to 1600 x 1200 resolution. Eight BNC Composite Inputs for DVD/DSS or Camera/UAV.
- Audio In: Four Mic level XLR Inputs and four Line Level XLR Inputs for DVD/DSS audio.
- Video Out: Five HD15 and eight CAT5 computer outputs supporting 1024 x 768, 1280 x 1024 and 1400 x 1050 user selectable resolutions.
- Audio Out: Four Line Level XLR outputs, one dedicated for speaker.
- Includes two AC powered speakers with integrated 20 Watt amplifier that can be daisy chained together for audio distribution.

PACKAGING

Large AV Case

15RU OD green case containing the Control System, two Four Window Display Processors, a Six Window Display Processor, two Quad Video Scalers, an Audio Matrix/Mixer and a 32 x 28 RGBHV Matrix Switcher.

Outer Dimensions: 40.4"L x 27"W x 33"H
(103 x 69 x 84 cm)

Packed Weight: 268 lbs. (122 kg)

Accessory Transport Case 1

Includes CAT5 TX/RX units, touch panel and speakers.

Outer Dimensions: 30"L x 21.5"W x 30"H
(76 x 55 x 76 cm)

Packed Weight: 150 lbs. (68 kg)

Accessory Transport Case 2

Includes cables.

Outer Dimensions: 25.5"L x 24"W x 24"H
(65 x 61 x 61 cm)

Packed Weight: 100 lbs. (45 kg)

